



September 27, 2025

IGI Report Number **LG729572017**

**ROUND BRILLIANT  
LABORATORY GROWN DIAMOND**  
6.13 - 6.23 X 3.79 MM

Carat Weight	<b>0.97 CARAT</b>
Color Grade	<b>F</b>
Clarity Grade	<b>VS 1</b>
Cut Grade	<b>FAIR</b>
Polish	<b>EXCELLENT</b>
Symmetry	<b>EXCELLENT</b>
Fluorescence	<b>NONE</b>
Inscription(s)	<b>IGI LG729572017</b>

Comments: This Laboratory Grown Diamond was created by Chemical Vapor Deposition (CVD) growth process. Type IIa

**LABORATORY GROWN DIAMOND REPORT**

September 27, 2025

IGI Report Number **LG729572017**

Description **LABORATORY GROWN DIAMOND**

Shape and Cutting Style **ROUND BRILLIANT**

Measurements **6.13 - 6.23 X 3.79 MM**

**GRADING RESULTS**

Carat Weight **0.97 CARAT**

Color Grade **F**

Clarity Grade **VS 1**

Cut Grade **FAIR**

**ADDITIONAL GRADING INFORMATION**

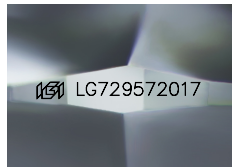
Polish **EXCELLENT**

Symmetry **EXCELLENT**

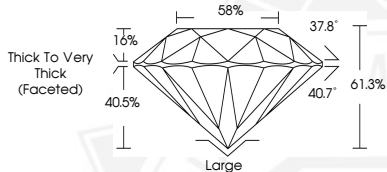
Fluorescence **NONE**

Inscription(s) **IGI LG729572017**

Comments: This Laboratory Grown Diamond was created by Chemical Vapor Deposition (CVD) growth process. Type IIa



Sample Image Used



September 27, 2025

IGI Report Number **LG729572017**

**ROUND BRILLIANT  
LABORATORY GROWN DIAMOND**  
6.13 - 6.23 X 3.79 MM

Carat Weight	<b>0.97 CARAT</b>
Color Grade	<b>F</b>
Clarity Grade	<b>VS 1</b>
Cut Grade	<b>FAIR</b>
Polish	<b>EXCELLENT</b>
Symmetry	<b>EXCELLENT</b>
Fluorescence	<b>NONE</b>
Inscription(s)	<b>IGI LG729572017</b>

Comments: This Laboratory Grown Diamond was created by Chemical Vapor Deposition (CVD) growth process. Type IIa



THIS DOCUMENT WAS PRODUCED WITH THE FOLLOWING SECURITY MEASURES: SPECIAL DOCUMENT PAPER, INK SCREENS, WATERMARK, BACKGROUND DESIGNS, HOLOGRAM AND OTHER SECURITY FEATURES NOT LISTED AND DO EXCEED DOCUMENT SECURITY INDUSTRY GUIDELINES.