



LABORATORY GROWN DIAMOND REPORT

February 18, 2026
 IGI Report Number **LG729572020**
 Description **LABORATORY GROWN DIAMOND**
 Shape and Cutting Style **OCTAGONAL MODIFIED BRILLIANT**
 Measurements **5.91 X 5.25 X 3.26 MM**

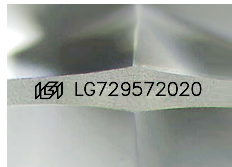
GRADING RESULTS

Carat Weight **0.78 CARAT**
 Color Grade **F**
 Clarity Grade **VVS 2**

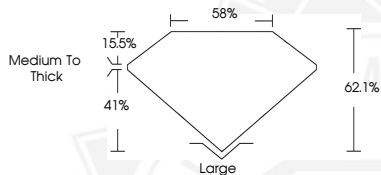
ADDITIONAL GRADING INFORMATION

Polish **VERY GOOD**
 Symmetry **EXCELLENT**
 Fluorescence **NONE**
 Inscription(s) **IGI LG729572020**

Comments: This Laboratory Grown Diamond was created by
 Chemical Vapor Deposition (CVD) growth process.
 Type IIa



Sample Image Used



February 18, 2026

IGI Report Number **LG729572020**
OCTAGONAL MODIFIED BRILLIANT
LABORATORY GROWN DIAMOND
5.91 X 5.25 X 3.26 MM

Carat Weight **0.78 CARAT**
 Color Grade **F**
 Clarity Grade **VVS 2**
 Polish **VERY GOOD**
 Symmetry **EXCELLENT**
 Fluorescence **NONE**
 Inscription(s) **IGI LG729572020**

Comments: This Laboratory Grown
 Diamond was created by
 Chemical Vapor Deposition (CVD)
 growth process. Type IIa



February 18, 2026

IGI Report Number **LG729572020**
OCTAGONAL MODIFIED BRILLIANT
LABORATORY GROWN DIAMOND
5.91 X 5.25 X 3.26 MM

Carat Weight **0.78 CARAT**
 Color Grade **F**
 Clarity Grade **VVS 2**
 Polish **VERY GOOD**
 Symmetry **EXCELLENT**
 Fluorescence **NONE**
 Inscription(s) **IGI LG729572020**

Comments: This Laboratory Grown
 Diamond was created by
 Chemical Vapor Deposition (CVD)
 growth process. Type IIa



THIS DOCUMENT WAS PRODUCED WITH THE FOLLOWING SECURITY MEASURES: SPECIAL DOCUMENT PAPER, INK SCREENS, WATERMARK, BACKGROUND DESIGNS, HOLOGRAM AND OTHER SECURITY FEATURES NOT LISTED AND DO EXCEED DOCUMENT SECURITY INDUSTRY GUIDELINES.