



LABORATORY GROWN DIAMOND REPORT

February 18, 2026
 IGI Report Number **LG729572021**
 Description **LABORATORY GROWN DIAMOND**
 Shape and Cutting Style **OCTAGONAL MODIFIED BRILLIANT**
 Measurements **5.94 X 5.21 X 3.34 MM**

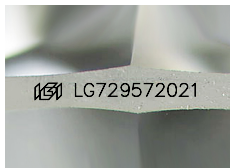
GRADING RESULTS

Carat Weight **0.79 CARAT**
 Color Grade **F**
 Clarity Grade **VS 1**

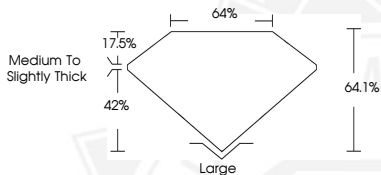
ADDITIONAL GRADING INFORMATION

Polish **VERY GOOD**
 Symmetry **EXCELLENT**
 Fluorescence **NONE**
 Inscription(s) **IGI LG729572021**

Comments: This Laboratory Grown Diamond was created by Chemical Vapor Deposition (CVD) growth process. Type IIa



Sample Image Used



February 18, 2026

IGI Report Number **LG729572021**
OCTAGONAL MODIFIED BRILLIANT
LABORATORY GROWN DIAMOND
5.94 X 5.21 X 3.34 MM

Carat Weight **0.79 CARAT**
 Color Grade **F**
 Clarity Grade **VS 1**
 Polish **VERY GOOD**
 Symmetry **EXCELLENT**
 Fluorescence **NONE**
 Inscription(s) **IGI LG729572021**

Comments: This Laboratory Grown Diamond was created by Chemical Vapor Deposition (CVD) growth process. Type IIa



February 18, 2026

IGI Report Number **LG729572021**
OCTAGONAL MODIFIED BRILLIANT
LABORATORY GROWN DIAMOND
5.94 X 5.21 X 3.34 MM

Carat Weight **0.79 CARAT**
 Color Grade **F**
 Clarity Grade **VS 1**
 Polish **VERY GOOD**
 Symmetry **EXCELLENT**
 Fluorescence **NONE**
 Inscription(s) **IGI LG729572021**

Comments: This Laboratory Grown Diamond was created by Chemical Vapor Deposition (CVD) growth process. Type IIa



THIS DOCUMENT WAS PRODUCED WITH THE FOLLOWING SECURITY MEASURES: SPECIAL DOCUMENT PAPER, INK SCREENS, WATERMARK, BACKGROUND DESIGNS, HOLOGRAM AND OTHER SECURITY FEATURES NOT LISTED AND DO EXCEED DOCUMENT SECURITY INDUSTRY GUIDELINES.