



# INTERNATIONAL GEMOLOGICAL INSTITUTE

## DIAMOND REPORT

September 24, 2025

IGI Report Number

731561834

Description

NATURAL DIAMOND

Shape and Cutting Style

ROUND BRILLIANT

Measurements

4.46 - 4.49 X 2.78 MM

## GRADING RESULTS

Carat Weight

0.34 CARAT

Color Grade

J

Clarity Grade

SI 2

Cut Grade

EXCELLENT

## ADDITIONAL GRADING INFORMATION

Polish

EXCELLENT

Symmetry

EXCELLENT

Fluorescence

VERY SLIGHT

Identification Features

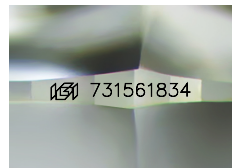
FEATHER, CLOUD

Inscription(s)

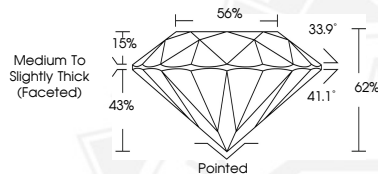
IGI 731561834

Comments: IDEAL CUT ROUND BRILLIANT

ELECTRONIC COPY



Sample Image Used



THIS DOCUMENT WAS PRODUCED WITH THE FOLLOWING SECURITY MEASURES: SPECIAL DOCUMENT PAPER, INK SCREENS, WATERMARK, BACKGROUND DESIGNS, HOLOGRAM AND OTHER SECURITY FEATURES NOT LISTED AND DO EXCEED DOCUMENT SECURITY INDUSTRY GUIDELINES.

For terms & conditions and to verify this report, please visit [www.igi.org](http://www.igi.org)



September 24, 2025

IGI Report Number 731561834

ROUND BRILLIANT

NATURAL DIAMOND

4.46 - 4.49 X 2.78 MM

Carat Weight 0.34 CARAT

Color Grade J

Clarity Grade SI 2

Cut Grade EXCELLENT

Polish EXCELLENT

Symmetry EXCELLENT

Fluorescence VERY SLIGHT

Inscription(s) IGI 731561834

Comments: IDEAL CUT ROUND

BRILLIANT



September 24, 2025

IGI Report Number 731561834

ROUND BRILLIANT

NATURAL DIAMOND

4.46 - 4.49 X 2.78 MM

Carat Weight 0.34 CARAT

Color Grade J

Clarity Grade SI 2

Cut Grade EXCELLENT

Polish EXCELLENT

Symmetry EXCELLENT

Fluorescence VERY SLIGHT

Inscription(s) IGI 731561834

Comments: IDEAL CUT ROUND

BRILLIANT