



# INTERNATIONAL GEMOLOGICAL INSTITUTE

## DIAMOND REPORT

September 24, 2025

IGI Report Number

734508408

Description

NATURAL DIAMOND

Shape and Cutting Style

ROUND BRILLIANT

Measurements

4.36 - 4.37 X 2.70 MM

### GRADING RESULTS

Carat Weight

0.31 CARAT

Color Grade

G

Clarity Grade

VS 1

Cut Grade

EXCELLENT

### ADDITIONAL GRADING INFORMATION

Polish

EXCELLENT

Symmetry

EXCELLENT

Fluorescence

NONE

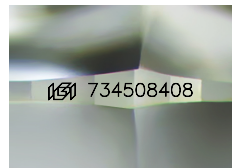
Identification Features

CLOUD

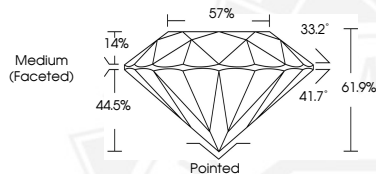
Inscription(s)

IGI 734508408

ELECTRONIC COPY



Sample Image Used



September 24, 2025

IGI Report Number 734508408

ROUND BRILLIANT

NATURAL DIAMOND

4.36 - 4.37 X 2.70 MM

Carat Weight

0.31 CARAT

Color Grade

G

Clarity Grade

VS 1

Cut Grade

EXCELLENT

Polish

EXCELLENT

Symmetry

EXCELLENT

Fluorescence

NONE

Inscription(s)

IGI 734508408



September 24, 2025

IGI Report Number 734508408

ROUND BRILLIANT

NATURAL DIAMOND

4.36 - 4.37 X 2.70 MM

Carat Weight

0.31 CARAT

Color Grade

G

Clarity Grade

VS 1

Cut Grade

EXCELLENT

Polish

EXCELLENT

Symmetry

EXCELLENT

Fluorescence

NONE

Inscription(s)

IGI 734508408



THIS DOCUMENT WAS PRODUCED WITH THE FOLLOWING SECURITY MEASURES: SPECIAL DOCUMENT PAPER, INK SCREENS, WATERMARK, BACKGROUND DESIGNS, HOLOGRAM AND OTHER SECURITY FEATURES NOT LISTED AND DO EXCEED DOCUMENT SECURITY INDUSTRY GUIDELINES.

For terms & conditions and to verify this report, please visit [www.igi.org](http://www.igi.org)