



# INTERNATIONAL GEMOLOGICAL INSTITUTE

ELECTRONIC COPY



October 3, 2025

IGI Report Number LG739535413

ROUND BRILLIANT  
LABORATORY GROWN DIAMOND  
4.14 - 4.17 X 2.57 MM

Carat Weight 0.27 CARAT  
Color Grade D  
Clarity Grade VVS 2  
Cut Grade IDEAL  
Polish EXCELLENT  
Symmetry EXCELLENT  
Fluorescence NONE  
Inscription(s) IGI LG739535413

Comments: This Laboratory Grown Diamond was created by Chemical Vapor Deposition (CVD) growth process. Type IIa

## LABORATORY GROWN DIAMOND REPORT

October 3, 2025  
IGI Report Number LG739535413  
Description LABORATORY GROWN DIAMOND  
Shape and Cutting Style ROUND BRILLIANT  
Measurements 4.14 - 4.17 X 2.57 MM

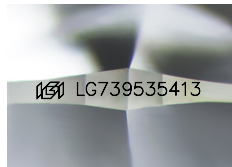
### GRADING RESULTS

Carat Weight 0.27 CARAT  
Color Grade D  
Clarity Grade VVS 2  
Cut Grade IDEAL

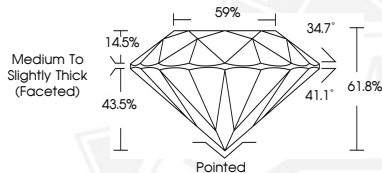
### ADDITIONAL GRADING INFORMATION

Polish EXCELLENT  
Symmetry EXCELLENT  
Fluorescence NONE  
Inscription(s) IGI LG739535413

Comments: This Laboratory Grown Diamond was created by Chemical Vapor Deposition (CVD) growth process.  
Type IIa



Sample Image Used



October 3, 2025

IGI Report Number LG739535413

ROUND BRILLIANT  
LABORATORY GROWN DIAMOND  
4.14 - 4.17 X 2.57 MM

Carat Weight 0.27 CARAT  
Color Grade D  
Clarity Grade VVS 2  
Cut Grade IDEAL  
Polish EXCELLENT  
Symmetry EXCELLENT  
Fluorescence NONE  
Inscription(s) IGI LG739535413

Comments: This Laboratory Grown Diamond was created by Chemical Vapor Deposition (CVD) growth process. Type IIa



THIS DOCUMENT WAS PRODUCED WITH THE FOLLOWING SECURITY MEASURES: SPECIAL DOCUMENT PAPER, INK SCREENS, WATERMARK, BACKGROUND DESIGNS, HOLOGRAM AND OTHER SECURITY FEATURES NOT LISTED AND DO EXCEED DOCUMENT SECURITY INDUSTRY GUIDELINES.

For terms & conditions and to verify this report, please visit [www.igi.org](http://www.igi.org)