



INTERNATIONAL GEMOLOGICAL INSTITUTE

ELECTRONIC COPY



October 3, 2025

IGI Report Number LG739556834

ROUND BRILLIANT
LABORATORY GROWN DIAMOND
4.24 - 4.26 X 2.65 MM

Carat Weight 0.29 CARAT
Color Grade D
Clarity Grade VVS 2
Cut Grade IDEAL
Polish EXCELLENT
Symmetry EXCELLENT
Fluorescence NONE
Inscription(s) IGI LG739556834

Comments: This Laboratory Grown Diamond was created by Chemical Vapor Deposition (CVD) growth process. Type IIa

LABORATORY GROWN DIAMOND REPORT

October 3, 2025
IGI Report Number LG739556834
Description LABORATORY GROWN DIAMOND
Shape and Cutting Style ROUND BRILLIANT
Measurements 4.24 - 4.26 X 2.65 MM

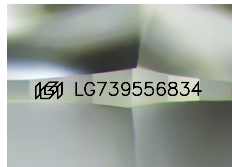
GRADING RESULTS

Carat Weight 0.29 CARAT
Color Grade D
Clarity Grade VVS 2
Cut Grade IDEAL

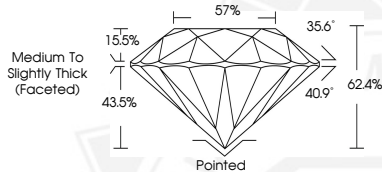
ADDITIONAL GRADING INFORMATION

Polish EXCELLENT
Symmetry EXCELLENT
Fluorescence NONE
Inscription(s) IGI LG739556834

Comments: This Laboratory Grown Diamond was created by Chemical Vapor Deposition (CVD) growth process.
Type IIa



Sample Image Used



October 3, 2025

IGI Report Number LG739556834

ROUND BRILLIANT
LABORATORY GROWN DIAMOND
4.24 - 4.26 X 2.65 MM

Carat Weight 0.29 CARAT
Color Grade D
Clarity Grade VVS 2
Cut Grade IDEAL
Polish EXCELLENT
Symmetry EXCELLENT
Fluorescence NONE
Inscription(s) IGI LG739556834

Comments: This Laboratory Grown Diamond was created by Chemical Vapor Deposition (CVD) growth process. Type IIa



THIS DOCUMENT WAS PRODUCED WITH THE FOLLOWING SECURITY MEASURES: SPECIAL DOCUMENT PAPER, INK SCREENS, WATERMARK, BACKGROUND DESIGNS, HOLOGRAM AND OTHER SECURITY FEATURES NOT LISTED AND DO EXCEED DOCUMENT SECURITY INDUSTRY GUIDELINES.

For terms & conditions and to verify this report, please visit www.igi.org