



**INTERNATIONAL  
GEMOLOGICAL  
INSTITUTE**

**LABORATORY GROWN DIAMOND REPORT**

October 3, 2025  
 IGI Report Number **LG739556844**  
 Description **LABORATORY GROWN DIAMOND**  
 Shape and Cutting Style **ROUND BRILLIANT**  
 Measurements **4.67 - 4.70 X 2.90 MM**

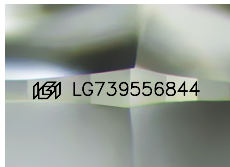
**GRADING RESULTS**

Carat Weight **0.39 CARAT**  
 Color Grade **E**  
 Clarity Grade **VVS 2**  
 Cut Grade **IDEAL**

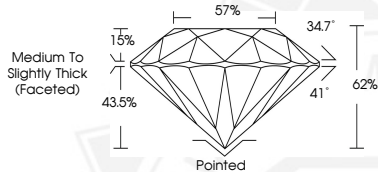
**ADDITIONAL GRADING INFORMATION**

Polish **EXCELLENT**  
 Symmetry **EXCELLENT**  
 Fluorescence **NONE**  
 Inscription(s) **IGI LG739556844**  
 Comments: This Laboratory Grown Diamond was created by  
 Chemical Vapor Deposition (CVD) growth process.  
 Type IIa

**ELECTRONIC COPY**



Sample Image Used



October 3, 2025  
 IGI Report Number **LG739556844**  
**ROUND BRILLIANT**  
**LABORATORY GROWN DIAMOND**  
**4.67 - 4.70 X 2.90 MM**  
 Carat Weight **0.39 CARAT**  
 Color Grade **E**  
 Clarity Grade **VVS 2**  
 Cut Grade **IDEAL**  
 Polish **EXCELLENT**  
 Symmetry **EXCELLENT**  
 Fluorescence **NONE**  
 Inscription(s) **IGI LG739556844**  
 Comments: This Laboratory Grown  
 Diamond was created by  
 Chemical Vapor Deposition (CVD)  
 growth process. Type IIa



October 3, 2025  
 IGI Report Number **LG739556844**  
**ROUND BRILLIANT**  
**LABORATORY GROWN DIAMOND**  
**4.67 - 4.70 X 2.90 MM**  
 Carat Weight **0.39 CARAT**  
 Color Grade **E**  
 Clarity Grade **VVS 2**  
 Cut Grade **IDEAL**  
 Polish **EXCELLENT**  
 Symmetry **EXCELLENT**  
 Fluorescence **NONE**  
 Inscription(s) **IGI LG739556844**  
 Comments: This Laboratory Grown  
 Diamond was created by  
 Chemical Vapor Deposition (CVD)  
 growth process. Type IIa



THIS DOCUMENT WAS PRODUCED WITH THE FOLLOWING SECURITY MEASURES: SPECIAL DOCUMENT PAPER, INK SCREENS, WATERMARK, BACKGROUND DESIGNS, HOLOGRAM AND OTHER SECURITY FEATURES NOT LISTED AND DO EXCEED DOCUMENT SECURITY INDUSTRY GUIDELINES.

For terms & conditions and to verify this report, please visit [www.igi.org](http://www.igi.org)