



**INTERNATIONAL
GEMOLOGICAL
INSTITUTE**

ELECTRONIC COPY



October 4, 2025

IGI Report Number **LG739556868**

**ROUND BRILLIANT
LABORATORY GROWN DIAMOND
4.44 - 4.48 X 2.74 MM**

Carat Weight	0.34 CARAT
Color Grade	E
Clarity Grade	VVS 2
Cut Grade	IDEAL
Polish	EXCELLENT
Symmetry	EXCELLENT
Fluorescence	NONE
Inscription(s)	IGI LG739556868

Comments: This Laboratory Grown Diamond was created by Chemical Vapor Deposition (CVD) growth process. Type IIa

LABORATORY GROWN DIAMOND REPORT

October 4, 2025
IGI Report Number **LG739556868**
Description **LABORATORY GROWN DIAMOND**
Shape and Cutting Style **ROUND BRILLIANT**
Measurements **4.44 - 4.48 X 2.74 MM**

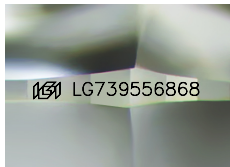
GRADING RESULTS

Carat Weight **0.34 CARAT**
Color Grade **E**
Clarity Grade **VVS 2**
Cut Grade **IDEAL**

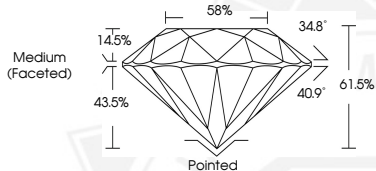
ADDITIONAL GRADING INFORMATION

Polish **EXCELLENT**
Symmetry **EXCELLENT**
Fluorescence **NONE**
Inscription(s) **IGI LG739556868**

Comments: This Laboratory Grown Diamond was created by Chemical Vapor Deposition (CVD) growth process. Type IIa



Sample Image Used



October 4, 2025

IGI Report Number **LG739556868**

**ROUND BRILLIANT
LABORATORY GROWN DIAMOND
4.44 - 4.48 X 2.74 MM**

Carat Weight	0.34 CARAT
Color Grade	E
Clarity Grade	VVS 2
Cut Grade	IDEAL
Polish	EXCELLENT
Symmetry	EXCELLENT
Fluorescence	NONE
Inscription(s)	IGI LG739556868

Comments: This Laboratory Grown Diamond was created by Chemical Vapor Deposition (CVD) growth process. Type IIa



THIS DOCUMENT WAS PRODUCED WITH THE FOLLOWING SECURITY MEASURES: SPECIAL DOCUMENT PAPER, INK SCREENS, WATERMARK, BACKGROUND DESIGNS, HOLOGRAM AND OTHER SECURITY FEATURES NOT LISTED AND DO EXCEED DOCUMENT SECURITY INDUSTRY GUIDELINES.

For terms & conditions and to verify this report, please visit www.igi.org