



October 6, 2025

IGI Report Number **LG739587338**

**ROUND BRILLIANT
LABORATORY GROWN DIAMOND
4.67 - 4.70 X 2.84 MM**

Carat Weight	0.38 CARAT
Color Grade	D
Clarity Grade	VVS 2
Cut Grade	EXCELLENT
Polish	EXCELLENT
Symmetry	EXCELLENT
Fluorescence	NONE
Inscription(s)	IGI LG739587338

Comments: This Laboratory Grown Diamond was created by Chemical Vapor Deposition (CVD) growth process. Type IIa

LABORATORY GROWN DIAMOND REPORT

October 6, 2025	
IGI Report Number	LG739587338
Description	LABORATORY GROWN DIAMOND
Shape and Cutting Style	ROUND BRILLIANT
Measurements	4.67 - 4.70 X 2.84 MM

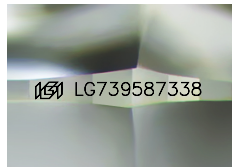
GRADING RESULTS

Carat Weight	0.38 CARAT
Color Grade	D
Clarity Grade	VVS 2
Cut Grade	EXCELLENT

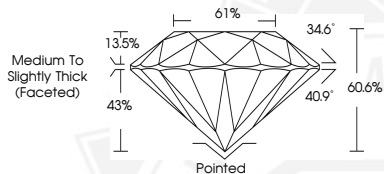
ADDITIONAL GRADING INFORMATION

Polish	EXCELLENT
Symmetry	EXCELLENT
Fluorescence	NONE
Inscription(s)	IGI LG739587338

Comments: This Laboratory Grown Diamond was created by Chemical Vapor Deposition (CVD) growth process. Type IIa



Sample Image Used



October 6, 2025

IGI Report Number **LG739587338**

**ROUND BRILLIANT
LABORATORY GROWN DIAMOND
4.67 - 4.70 X 2.84 MM**

Carat Weight	0.38 CARAT
Color Grade	D
Clarity Grade	VVS 2
Cut Grade	EXCELLENT
Polish	EXCELLENT
Symmetry	EXCELLENT
Fluorescence	NONE
Inscription(s)	IGI LG739587338

Comments: This Laboratory Grown Diamond was created by Chemical Vapor Deposition (CVD) growth process. Type IIa



THIS DOCUMENT WAS PRODUCED WITH THE FOLLOWING SECURITY MEASURES: SPECIAL DOCUMENT PAPER, INK SCREENS, WATERMARK, BACKGROUND DESIGNS, HOLOGRAM AND OTHER SECURITY FEATURES NOT LISTED AND DO EXCEED DOCUMENT SECURITY INDUSTRY GUIDELINES.