



INTERNATIONAL GEMOLOGICAL INSTITUTE

DIAMOND REPORT

January 19, 2026
IGI Report Number
Description
Shape and Cutting Style
Measurements

746510330
NATURAL DIAMOND
ROUND BRILLIANT
6.21 - 6.26 X 3.95 MM

GRADING RESULTS

Carat Weight
Color Grade
Clarity Grade
Cut Grade

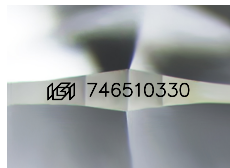
0.95 CARAT
H
INTERNALLY FLAWLESS
EXCELLENT

ADDITIONAL GRADING INFORMATION

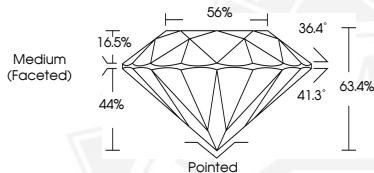
Polish
Symmetry
Fluorescence
Inscription(s)

EXCELLENT
EXCELLENT
NONE
IGI 746510330

ELECTRONIC COPY



Sample Image Used



THIS DOCUMENT WAS PRODUCED WITH THE FOLLOWING SECURITY MEASURES: SPECIAL DOCUMENT PAPER, INK SCREENS, WATERMARK, BACKGROUND DESIGNS, HOLOGRAM AND OTHER SECURITY FEATURES NOT LISTED AND DO EXCEED DOCUMENT SECURITY INDUSTRY GUIDELINES.

For terms & conditions and to verify this report, please visit www.igi.org



January 19, 2026

IGI Report Number 746510330

ROUND BRILLIANT

NATURAL DIAMOND

6.21 - 6.26 X 3.95 MM

Carat Weight 0.95 CARAT

Color Grade H

Clarity Grade I.F.

Cut Grade EXCELLENT

Polish EXCELLENT

Symmetry EXCELLENT

Fluorescence NONE

Inscription(s) IGI 746510330



January 19, 2026

IGI Report Number 746510330

ROUND BRILLIANT

NATURAL DIAMOND

6.21 - 6.26 X 3.95 MM

Carat Weight 0.95 CARAT

Color Grade H

Clarity Grade I.F.

Cut Grade EXCELLENT

Polish EXCELLENT

Symmetry EXCELLENT

Fluorescence NONE

Inscription(s) IGI 746510330