



INTERNATIONAL GEMOLOGICAL INSTITUTE

LABORATORY GROWN DIAMOND REPORT

December 17, 2025

IGI Report Number

LG758517714

Description

LABORATORY GROWN DIAMOND

Shape and Cutting Style

OVAL MODIFIED BRILLIANT

Measurements

7.84 X 5.14 X 3.13 MM

GRADING RESULTS

Carat Weight

0.92 CARAT

Color Grade

E

Clarity Grade

VS 2

ADDITIONAL GRADING INFORMATION

Polish

EXCELLENT

Symmetry

VERY GOOD

Fluorescence

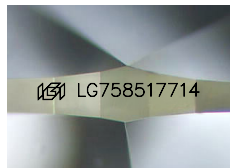
NONE

Inscription(s)

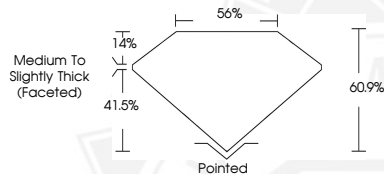
IGI LG758517714

Comments: This Laboratory Grown Diamond was created by Chemical Vapor Deposition (CVD) growth process. Type IIa

ELECTRONIC COPY



Sample Image Used



December 17, 2025

IGI Report Number LG758517714

OVAL MODIFIED BRILLIANT

LABORATORY GROWN DIAMOND

7.84 X 5.14 X 3.13 MM

Carat Weight 0.92 CARAT

Color Grade E

Clarity Grade VS 2

Polish EXCELLENT

Symmetry VERY GOOD

Fluorescence NONE

Inscription(s) IGI LG758517714

Comments: This Laboratory Grown Diamond was created by Chemical Vapor Deposition (CVD) growth process. Type IIa



December 17, 2025

IGI Report Number LG758517714

OVAL MODIFIED BRILLIANT

LABORATORY GROWN DIAMOND

7.84 X 5.14 X 3.13 MM

Carat Weight 0.92 CARAT

Color Grade E

Clarity Grade VS 2

Polish EXCELLENT

Symmetry VERY GOOD

Fluorescence NONE

Inscription(s) IGI LG758517714

Comments: This Laboratory Grown Diamond was created by Chemical Vapor Deposition (CVD) growth process. Type IIa



THIS DOCUMENT WAS PRODUCED WITH THE FOLLOWING SECURITY MEASURES: SPECIAL DOCUMENT PAPER, INK SCREENS, WATERMARK, BACKGROUND DESIGNS, HOLOGRAM AND OTHER SECURITY FEATURES NOT LISTED AND DO EXCEED DOCUMENT SECURITY INDUSTRY GUIDELINES.

For terms & conditions and to verify this report, please visit www.igi.org