



April 15, 2026

IGI Report Number LG782655466
ROUND BRILLIANT
LABORATORY GROWN DIAMOND
5.11 - 5.17 X 3.08 MM

Carat Weight 0.50 CARAT
Color Grade LIGHT GREEN
Clarity Grade VVS 2
Cut Grade EXCELLENT
Polish EXCELLENT
Symmetry EXCELLENT
Fluorescence VERY SLIGHT
Inscription(s) IGI LG782655466

Comments: This Laboratory Grown Diamond was created by Chemical Vapor Deposition (CVD) growth process.

LABORATORY GROWN DIAMOND REPORT

April 15, 2026
IGI Report Number **LG782655466**
Description **LABORATORY GROWN DIAMOND**
Shape and Cutting Style **ROUND BRILLIANT**
Measurements **5.11 - 5.17 X 3.08 MM**

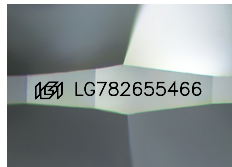
GRADING RESULTS

Carat Weight 0.50 CARAT
Color Grade LIGHT GREEN
Clarity Grade VVS 2
Cut Grade EXCELLENT

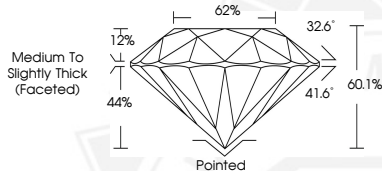
ADDITIONAL GRADING INFORMATION

Polish EXCELLENT
Symmetry EXCELLENT
Fluorescence VERY SLIGHT
Inscription(s) IGI LG782655466

Comments: This Laboratory Grown Diamond was created by Chemical Vapor Deposition (CVD) growth process.



Sample Image Used



April 15, 2026

IGI Report Number LG782655466
ROUND BRILLIANT
LABORATORY GROWN DIAMOND
5.11 - 5.17 X 3.08 MM

Carat Weight 0.50 CARAT
Color Grade LIGHT GREEN
Clarity Grade VVS 2
Cut Grade EXCELLENT
Polish EXCELLENT
Symmetry EXCELLENT
Fluorescence VERY SLIGHT
Inscription(s) IGI LG782655466

Comments: This Laboratory Grown Diamond was created by Chemical Vapor Deposition (CVD) growth process.



THIS DOCUMENT WAS PRODUCED WITH THE FOLLOWING SECURITY MEASURES: SPECIAL DOCUMENT PAPER, INK SCREENS, WATERMARK, BACKGROUND DESIGNS, HOLOGRAM AND OTHER SECURITY FEATURES NOT LISTED AND DO EXCEED DOCUMENT SECURITY INDUSTRY GUIDELINES.