



March 31, 2026

IGI Report Number **LG787653508**

PEAR BRILLIANT

LABORATORY GROWN DIAMOND

6.70 X 4.16 X 2.41 MM

Carat Weight	0.41 CARAT
Color Grade	D
Clarity Grade	VS 1
Polish	VERY GOOD
Symmetry	VERY GOOD
Fluorescence	NONE
Inscription(s)	IGI LG787653508

Comments: This Laboratory Grown Diamond was created by Chemical Vapor Deposition (CVD) growth process. Type IIa

LABORATORY GROWN DIAMOND REPORT

March 31, 2026	
IGI Report Number	LG787653508
Description	LABORATORY GROWN DIAMOND
Shape and Cutting Style	PEAR BRILLIANT
Measurements	6.70 X 4.16 X 2.41 MM

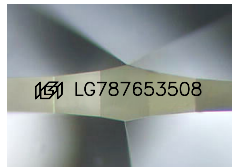
GRADING RESULTS

Carat Weight	0.41 CARAT
Color Grade	D
Clarity Grade	VS 1

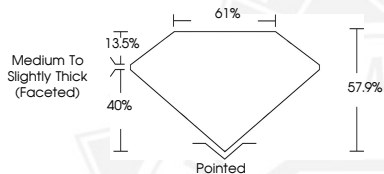
ADDITIONAL GRADING INFORMATION

Polish	VERY GOOD
Symmetry	VERY GOOD
Fluorescence	NONE
Inscription(s)	IGI LG787653508

Comments: This Laboratory Grown Diamond was created by Chemical Vapor Deposition (CVD) growth process.
Type IIa



Sample Image Used



March 31, 2026

IGI Report Number **LG787653508**

PEAR BRILLIANT

LABORATORY GROWN DIAMOND

6.70 X 4.16 X 2.41 MM

Carat Weight	0.41 CARAT
Color Grade	D
Clarity Grade	VS 1
Polish	VERY GOOD
Symmetry	VERY GOOD
Fluorescence	NONE
Inscription(s)	IGI LG787653508

Comments: This Laboratory Grown Diamond was created by Chemical Vapor Deposition (CVD) growth process. Type IIa



THIS DOCUMENT WAS PRODUCED WITH THE FOLLOWING SECURITY MEASURES: SPECIAL DOCUMENT PAPER, INK SCREENS, WATERMARK, BACKGROUND DESIGNS, HOLOGRAM AND OTHER SECURITY FEATURES NOT LISTED AND DO EXCEED DOCUMENT SECURITY INDUSTRY GUIDELINES.